

# System No. C-AJ-2405



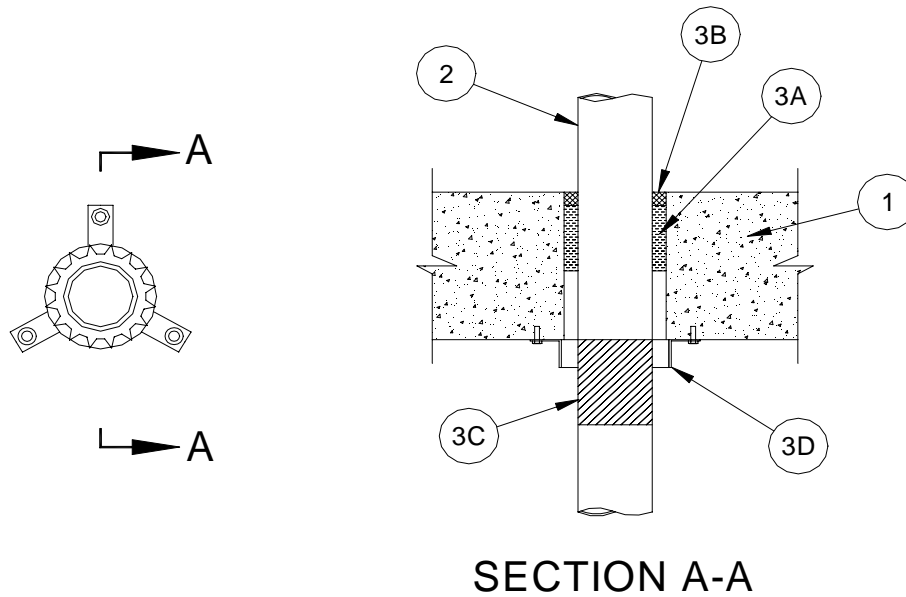
F Rating - 2 Hr

T Rating - 2 Hr

L Rating At Ambient – Less Than 1 CFM / Sq. Ft.

L Rating At 400°F – 3 CFM / Sq. Ft.

W Rating - Class 1



1. **Floor or Wall Assembly** - Min 4-1/2 in. (114 mm) thick reinforced lightweight or normal weight (100 - 150 pcf or 1600 – 2400 kg/m<sup>3</sup>) concrete. Wall may also be constructed of any UL Classified **Concrete Blocks\***. Diam of opening is 1 in. (25 mm) larger than the nominal pipe diameter.

See **Concrete Blocks** (CAZT) category in the Fire Resistance Directory for names of manufacturers.

2. **Polyvinylidene Fluoride (PVDF) Pipe†** – One nom 4 in. (102 mm) diam (or smaller) Schedule 40 PVDF pipe installed either concentrically or eccentrically within opening. The annular space between the pipe and the edge of the opening shall be min 3/16 in. (5 mm) to max 5/16 in. (8 mm). Pipe to be rigidly supported on both sides of the floor or wall assembly. For use in closed (process or supply) or vented (drain, waste or vent) piping systems.

3. **Firestop System** - The firestop system shall consist of the following:

- A. **Packing Material** – Min 2 in. (51 mm) thickness of min 4.0 pcf (64 kg/m<sup>3</sup>) mineral wool batt insulation firmly packed into opening as a permanent form. Packing material to be recessed from top surface of floor or both surfaces of wall to accommodate the required thickness of fill material.

*The basic Standard used to evaluate this Firestop System is ANSI/UL 1479 (ASTM E814)*

- B. **Fill, Void or Cavity Material\* - Sealant** - Min 1/4 in. (6 mm) thickness of fill material applied within annulus, flush with the top surface of floor or with both surfaces of wall assembly.

**NUCO INC.** - Self Seal GG-200 or •Self Seal GG-266

- C. **Foil Tape** - Nom 4 in. (102 mm) wide, 3 mil thick aluminum tape wrapped around pipe prior to installation of collar (Item 3D). One wrap of tape installed around circumference of pipe, flush with bottom of floor and extending downward, or flush with both surfaces of wall and extending outward.

- D. **Firestop Device\* - Collar** - Collar to be installed in accordance with the accompanying installation instructions. Collar to be installed and latched around pipe and secured to bottom of floor or both sides of wall with min 3/16 in. (5 mm) diam by min 1-1/4 in. (32 mm) long steel masonry anchors with min 1-1/4 in. (32 mm) diam steel fender washers. Min of two, three or four concrete anchors symmetrically located, for nom 1-1/2 and 2 in. diam (38 and 52 mm ID), nom 3 in. diam (76 mm ID) and nom 4 in. diam (102 mm ID) pipes, respectively.

**NUCO INC.** - •Self Seal Type-SSC

\* Bearing the UL Classification Mark

‡ The through-penetrant is not to be stressed beyond the permissible bending deflection for the intended operating temperature as established by the pipe manufacturer.

• In addition to the standardized environmental exposures, Self Seal GG-266 and Type-SSC were also exposed to supplemental environmental exposures of an Industrial Atmosphere (CO<sub>2</sub>/SO<sub>2</sub>) and Combination Wet, Freeze and Dry Cycling.