

System No. W-L-6007

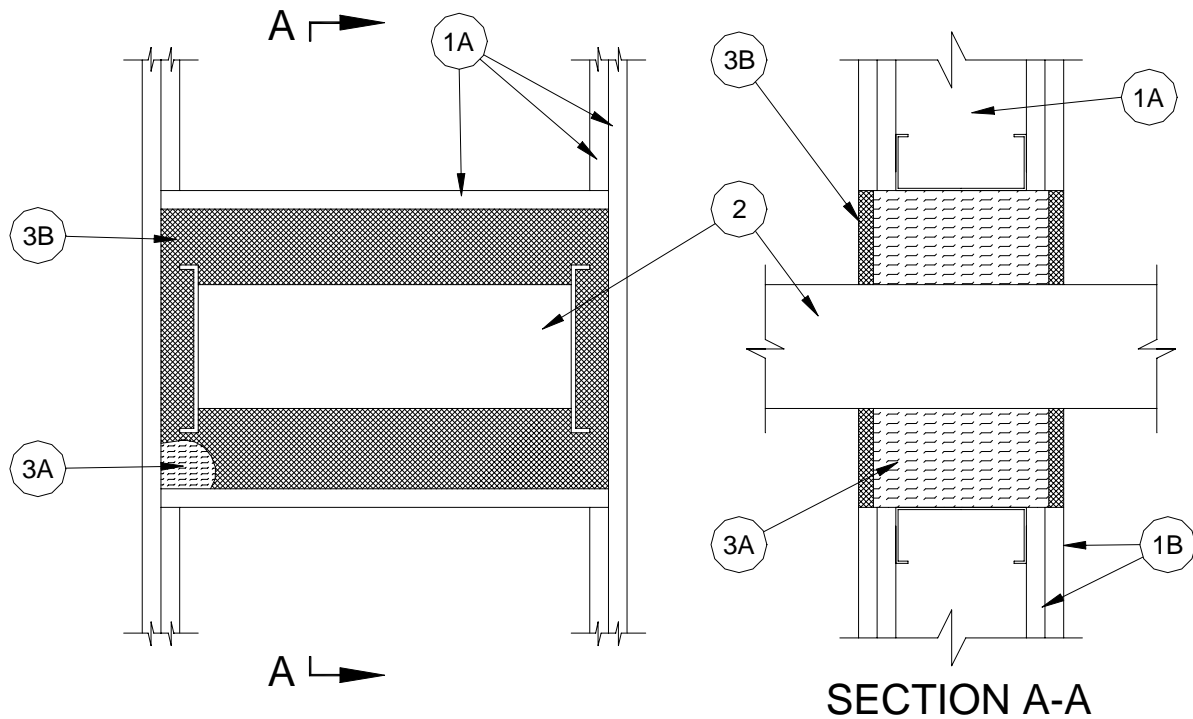


F Ratings - 1 and 2 Hr (See Item 1)

T Rating - 0 Hr

L Rating At Ambient – Less Than 1 CFM / Sq. Ft.

L Rating At 400°F – 2 CFM / Sq. Ft.



1. **Wall Assembly** – The 1 or 2 Hr fire-rated gypsum wallboard / stud wall assembly shall be constructed of the materials and in the manner specified in the individual U400 Series Wall and Partition Designs in the UL Fire Resistance Directory and shall include the following construction features:
 - A. **Studs** - Wall framing to consist of min 3-1/2 in. wide steel channel studs spaced max 24 in. OC for 1 Hr rated walls. Steel studs to be min 2-1/2 in. wide and spaced max 24 in. OC for 2 Hr rated walls. Additional framing members to be installed in stud cavity containing busway to form a rectangular box around the opening.
 - B. **Wallboard, Gypsum*** - One or two layers of nom 5/8 in. thick gypsum wallboard, as specified in the individual Wall and Partition Design. Max area of opening is 364 sq. in. with max dimensions of 26 in. wide by 14 in. high.

The hourly F Rating of the firestop system is equal to the hourly rating of the wall.

2. **Busway +** - Nom 23 in. wide by 6 in. deep (or smaller) "I" shaped aluminum and steel enclosure containing factory mounted copper or aluminum bars rated for 600 V, 4000 A. One busway to be installed within the opening. The annular space between the busway and the periphery of the opening shall be min 3/4 in. to max 4 in. Busway to be rigidly supported on both sides of wall assembly. The busway shall bear the UL Listing Mark and shall be installed in accordance with all provisions of Article 364 of the National Electrical Code, NFPA 70.

The basic Standards used to evaluate this Firestop System are ANSI/UL 1479 (ASTM E814) and CAN/ULC-S115

3. **Firestop System** - The firestop system shall consist of the following:
- A. **Packing Material** - Min 4.0 in. thickness of min 4.0 pcf mineral wool batt insulation packed at 50 percent compression into opening as a permanent form. Packing material to be recessed from both surfaces of wall as required to accommodate the required thickness of fill material.
 - B. **Fill, Void or Cavity Material* - Sealant** - Min 3/8 in. thickness of fill material applied within the annular space, flush with both surfaces of wall.

NUCO INC. - Self Seal GG-200

* Bearing the UL Classification Mark

+ Bearing the UL Listing Mark